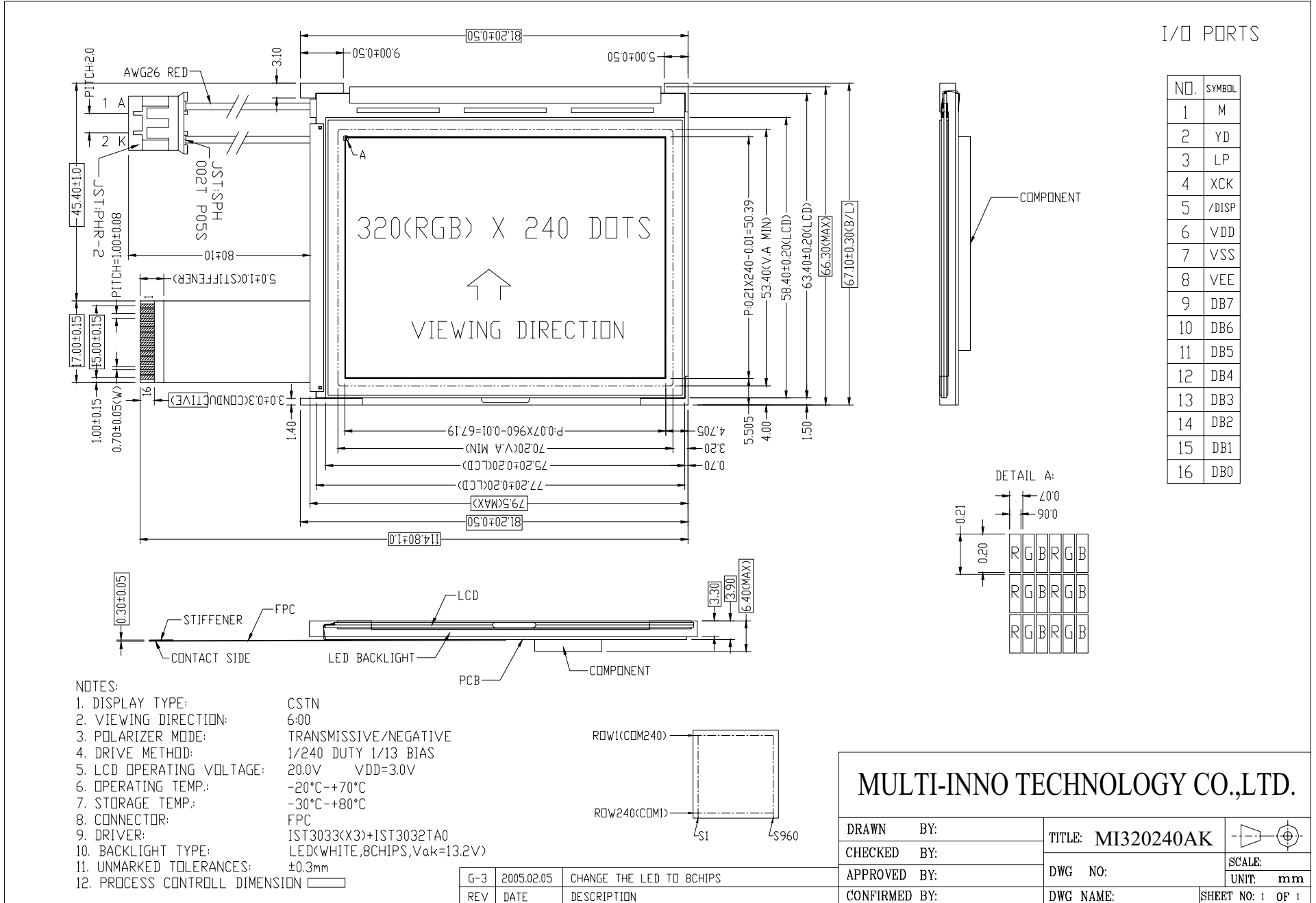




MI320240AK

VER.2.0

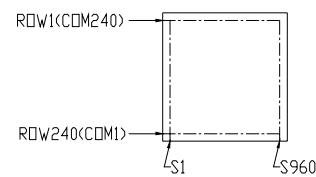


I/O PORTS

NO.	SYMBOL
1	M
2	YD
3	LP
4	XCK
5	/DISP
6	VDD
7	VSS
8	VEE
9	DB7
10	DB6
11	DB5
12	DB4
13	DB3
14	DB2
15	DB1
16	DB0

NOTES:

- 1. DISPLAY TYPE: CSTN
- 2. VIEWING DIRECTION: 6:00
- 3. POLARIZER MODE: TRANSMISSIVE/NEGATIVE
- 4. DRIVE METHOD: 1/240 DUTY 1/13 BIAS
- 5. LCD OPERATING VOLTAGE: 20.0V VDD=3.0V
- 6. OPERATING TEMP.: -20°C~+70°C
- 7. STORAGE TEMP.: -30°C~+80°C
- 8. CONNECTOR: FPC
- 9. DRIVER: IST3033(X3)+IST3032TA0
- 10. BACKLIGHT TYPE: LED<WHITE,8CHIPS,Vak=13.2V>
- 11. UNMARKED TOLERANCES: ±0.3mm
- 12. PROCESS CONTROLL DIMENSION



MULTI-INNO TECHNOLOGY CO.,LTD.

DRAWN BY:	TITLE: MI320240AK	
CHECKED BY:	DWG NO:	SCALE:
APPROVED BY:	DWG NAME:	UNIT: mm
CONFIRMED BY:		SHEET NO: 1 OF 1

REV	DATE	DESCRIPTION
G-3	2005.02.05	CHANGE THE LED TO 8CHIPS