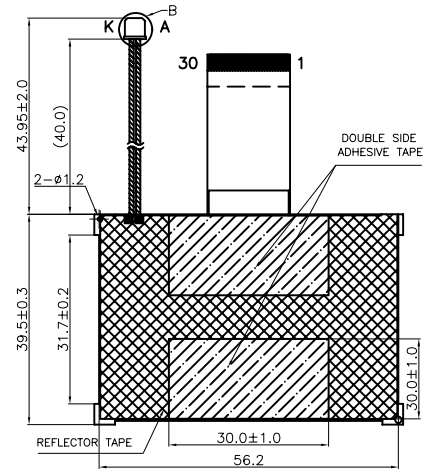
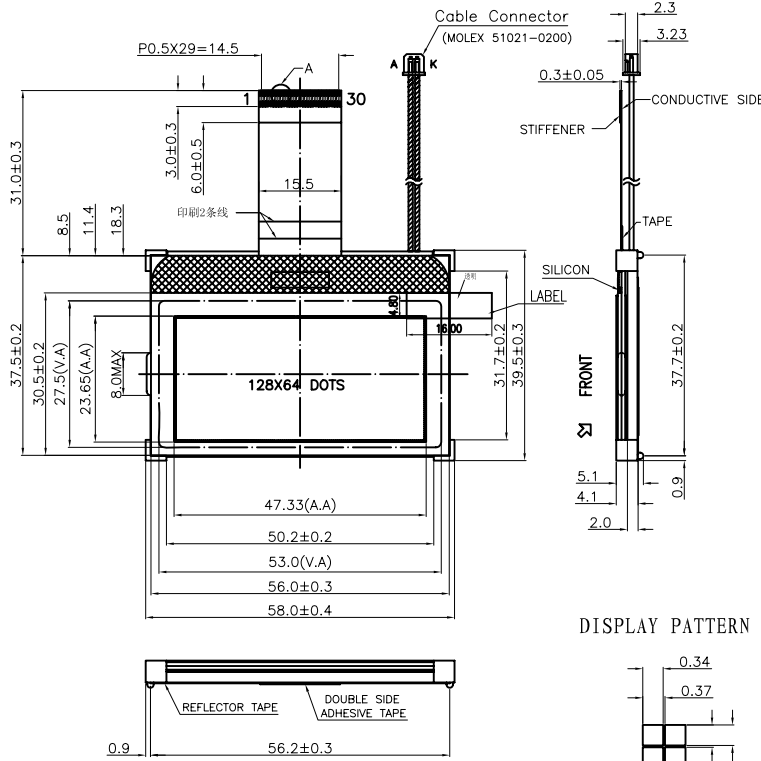
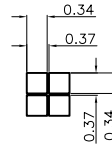


PIN CONNECTION:

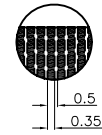
NO	PIN	NO	PIN
1	CSIB	16	VSS
2	RESETB	17	VDD
3	RS	18	VOUT
4	/WR(R/W)	19	CAP3+
5	/RD(E)	20	CAP3-
6	DB0	21	CAP1+
7	DB1	22	CAP1-
8	DB2	23	CAP2+
9	DB3	24	CAP2-
10	DB4	25	V0
11	DB5	26	V1
12	DB6	27	V2
13	DB7	28	V3
14	M(C86)	29	V4
15	PS	30	NC



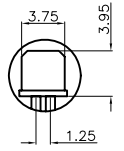
DISPLAY PATTERN



DETAIL A



DETAIL B



NOTES:

1. DISPLAY TYPE: FSTN, TRANSFLECTIVE/POSITIVE.
2. DRIVE METHOD: 1/65DUTY, 1/9BIAS, VOP=8.7V, VDD=3.0V
3. VIEWING DIRECTION: 6 O'CLOCK.
4. IC DRIVER: ST7565R-G.
5. OPERATING TEMP: -20°C ~ 70°C.
6. STORAGE TEMP: -30°C ~ 80°C.
7. LED BACKLIGHT: WHITE EDGE LEDA-LEDK=3.1V.
8. ALL UNMARKED TOLERANCES: ±0.2.
9. RoHS COMPLIANT.

01	更改背光双面胶的尺寸和位置
VERSION	MODIFYCONTENT

CUSTOMER APVL		DATE	
DRAWN	SCALE	TITLE	
DFTG CHK	UNIT	MODULE	
ENGR CHK	mm	MODEL	
APPROVAL		MI12864R-G	
MULTI-INNO TECHNOLOGY CO.,LTD.		DWG NO	PAGE
		01	1/5