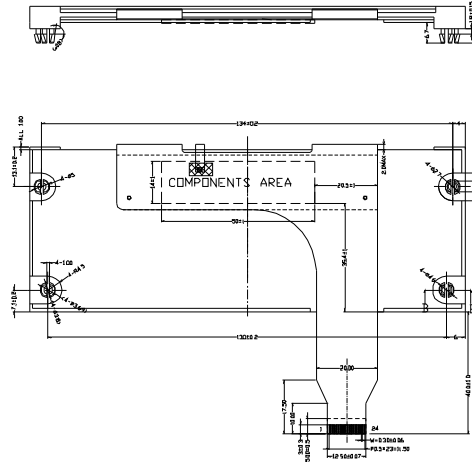
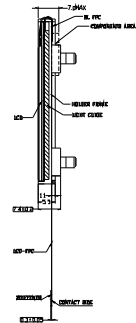
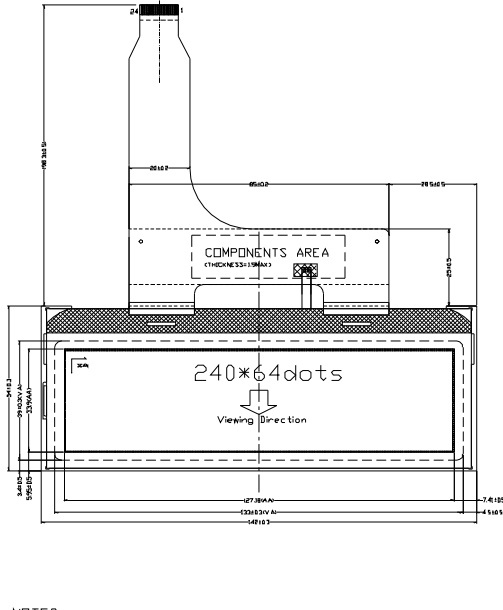


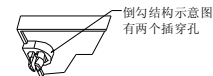
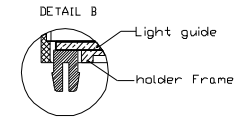


Customer No.:



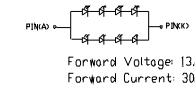
CON1

PIN	SYMBOL	PIN	SYMBOL
1	VSS	13	D3
2	VSS	14	D2
3	A	15	D1
4	K	16	D0
5	P/S	17	RD
6	C86	18	WR
7	VSS	19	A0
8	VDD	20	/RST
9	D7	21	/CSM
10	D6	22	/CSS
11	D5	23	VSS
12	D4	24	VSS



B-B

CIRCUIT DIAGRAM



NOTES:

1. DISPLAY TYPE: FSTN
2. VIEWING DIRECTION: 12:00
3. POLARIZER MODE: TRANSFLECTIVE/POSITIVE
4. LCD CONTROLLER: ST7565PX2
5. DRIVE METHOD: 1/65 DUTY BIAS: 1/9
6. VDD: 3.0V
7. OPERATING VOLTAGE: 10V
8. BACKLIGHT: WHITE LED-8 CHIP
9. OPERATING TEMP: -20°C~70°C
10. STORAGE TEMP: -30°C~80°C
11. UNMARKED TOLERANCE:±0.3
12. MEANS IMPORTANT DIMENSION
13. REQUIREMENTS ON ENVIRONMENTAL PROTECTION: RoHS

DOTS DETAIL



弯折出货

CUSTOMER APPROVE		AMEND		S-LCM*****	MULTI-INNO TECHNOLOGY CO.,LTD.		
Mechanical	Electrical	△		TOLERANCE:	PRODUCT NO.	DRAW NO.	REV
		△		DECIMAL	MI24064I-G		D
		△		.x ± .50	DWN 2008/05/02	DSN 2008/04/22	
		△	FPC	.xx ± .30	CHKD 2008/04/22	APPD 2008/04/22	
		NO.	CONTENT	DATE	NOT IN SCALE UNIT mm SHEET: 1/1		