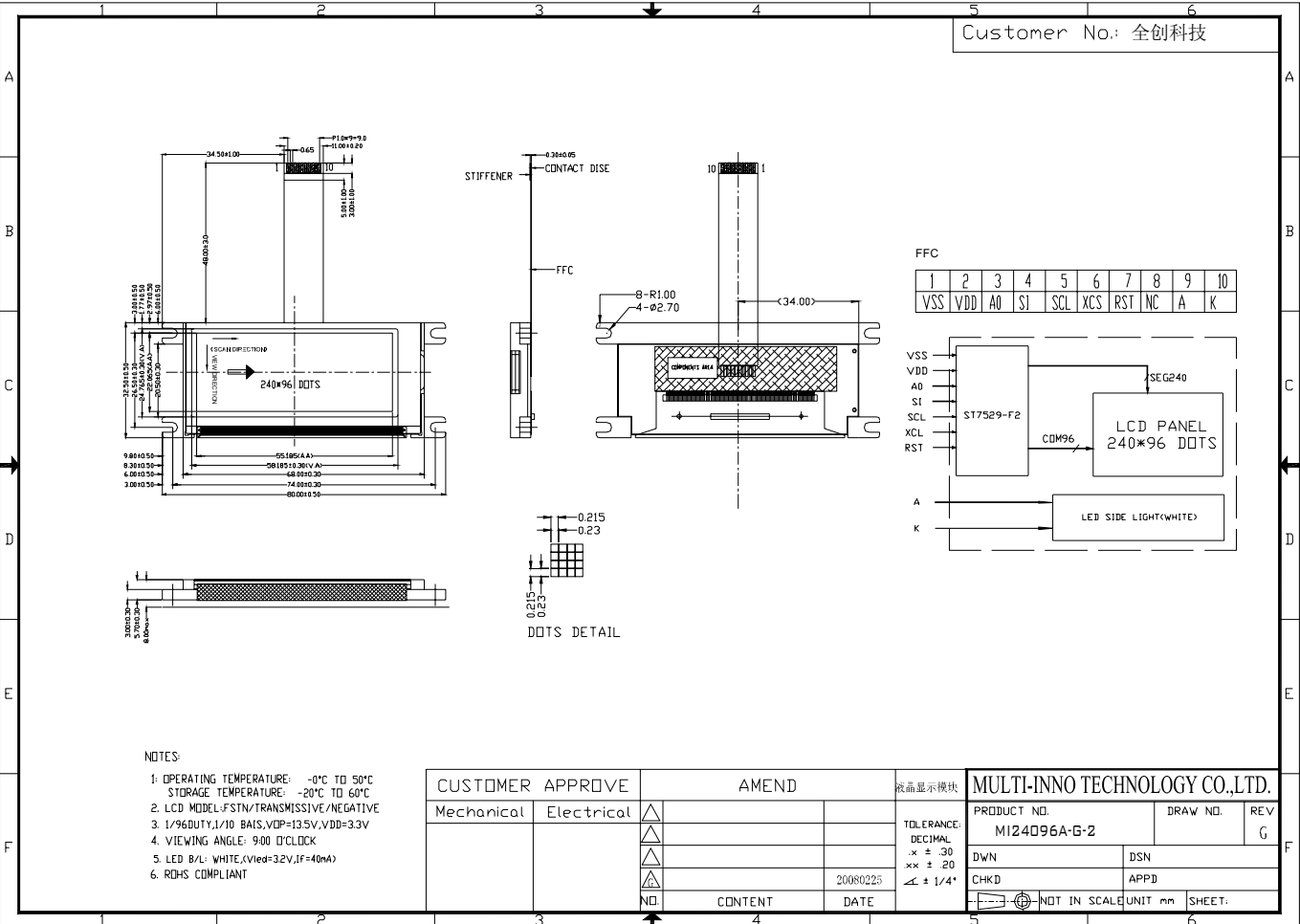


Customer No: 全创科技



- NOTES:
1. OPERATING TEMPERATURE: -0°C TO 50°C
STORAGE TEMPERATURE: -20°C TO 60°C
 2. LCD MODEL: FSTN/TRANSMISSIVE/NEGATIVE
 3. 1/96 DUTY, 1/10 BAIS, VDP=13.5V, VDD=3.3V
 4. VIEWING ANGLE: 9:00 O'CLOCK
 5. LED B/L: WHITE (Vled=3.2V, If=40mA)
 6. RoHS COMPLIANT

CUSTOMER APPROVE		AMEND		液晶显示模块	MULTI-INNO TECHNOLOGY CO.,LTD.		
Mechanical	Electrical	△		TOLERANCE: DECIMAL .x ± .30 xx ± .20 ∠ ± 1/4°	PRODUCT NO. MI24096A-G-2	DRAW NO.	REV G
		△		20080225	DWN	DSN	
		△			CHKD	APPD	
		NO	CONTENT	DATE	NOT IN SCALE		UNIT mm SHEET: