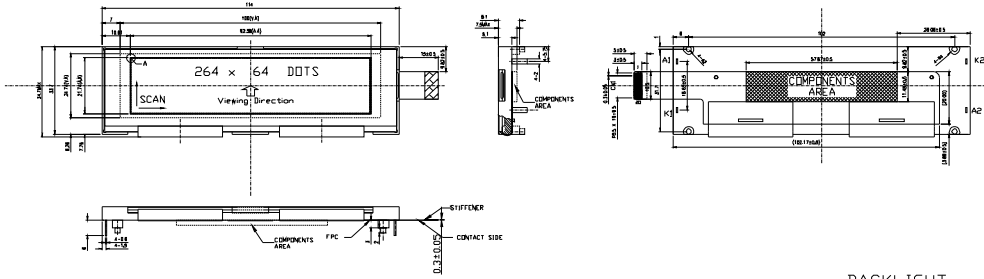


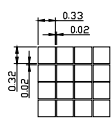


Customer No.:



- NOTES:
1. DISPLAY TYPE : FSTN ,TRANSLECTIVE/POSITIVE.
  2. DRIVE METHOD:1/65 DUTY,1/9 BIAS,VOP=11V; VDD=3.0V
  3. VIEWING DIRECTION: 6 O'CLOCK.
  4. CONTROLLER DRIVER: ST7565P-F1(TAB)
  5. OPERATING TEMP: -20°C ~ 70°C.
  6. STORAGE TEMP: -30°C ~ 80°C.
  7. BACKLIGHT LED AMBRE (請參閱本公司背光模組規格書)
  8. MATERIAL TO BE RoHS COMPLIANT.
  9. UNMARKED TOLERANCE: ±0.3mm.

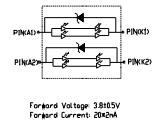
DETAIL A  
SCALE 20:1



CN1

PIN	SYMBOL	PIN	SYMBOL
1	GND	11	D2
2	P/S	12	D1
3	CS	13	D0
4	VSS	14	RD
5	VDD	15	WR
6	D7	16	A0
7	D6	17	RST
8	D5	18	/CSM
9	D4	19	/CSS
10	D3	20	GND

BACKLIGHT  
CIRCUIT



CUSTOMER APPROVE		AMEND		MULTI-INNO TECHNOLOGY CO.,LTD.		
Mechanical	Electrical			PRODUCT NO.	DRAW NO.	REV
				CMF-TG1P4167DPSA-W-E	CSZLCM1118	A
				DWN 陈少棉	DSN 陈少棉	
				CHKD 彭力锋	APPD 黄英群	
				NDT IN SCALE UNIT mm SHEET:		
		CONTENT	DATE			

SLC0808显示模组  
TOLERANCE:  
DECIMAL  
x ± .30  
xx ± .20  
∠ ± 1/4°