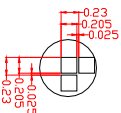
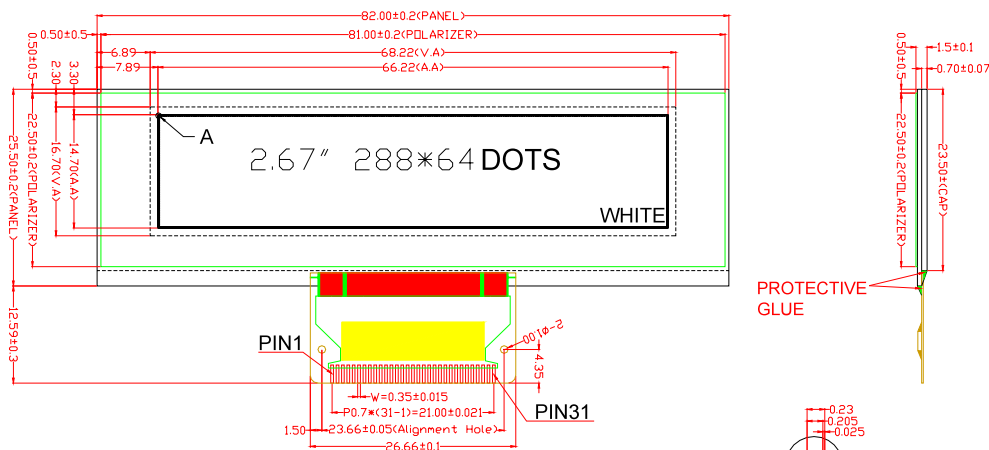




Customer No.:

PIN DESCRIPTION

PIN	SYMBOL	PIN	SYMBOL
1	NC	17	CS#
2	VCC	18	IREF
3	VCOMH	19	BS2
4	NC	20	BS1
5	D7	21	VDD
6	D6	22	VP_C
7	D5	23	VP_B
8	D4	24	VP_A
9	D3	25	VBREF
10	D2	26	RESE
11	D1	27	FB
12	D0	28	VDDDB
13	E<RD>	29	GDR
14	RW#<WR>	30	VSS
15	DC#	31	NC
16	RES#		



Detail A

NOTES:

1. OPERATING TEMPERATURE: -20°C TO 70°C
2. STORAGE TEMPERATURE: -30°C TO 80°C
3. DRIVER IC: SSD1332
4. GENERAL TOLERANCE: ±0.2
5. ROHS COMPLIANCY

CUSTOMER APPROVE		AMEND		OLED 粘模成		MULTI-INNO TECHNOLOGY CO.,LTD.		
Mechanical	Electrical			1/64 DUTY	PRODUCT NO.	DRAW NO.	REV	
				BIAS	MI28864AO	OLED186	A	
				Vop	DWN 零件#20080616	DSN 零件#20080616		
				VDD	CHKD 零件#20080616	APPD 零件#20080616		
				DCLOCK				
NO.	CONTENT	DATE					SHEET: 3/3	