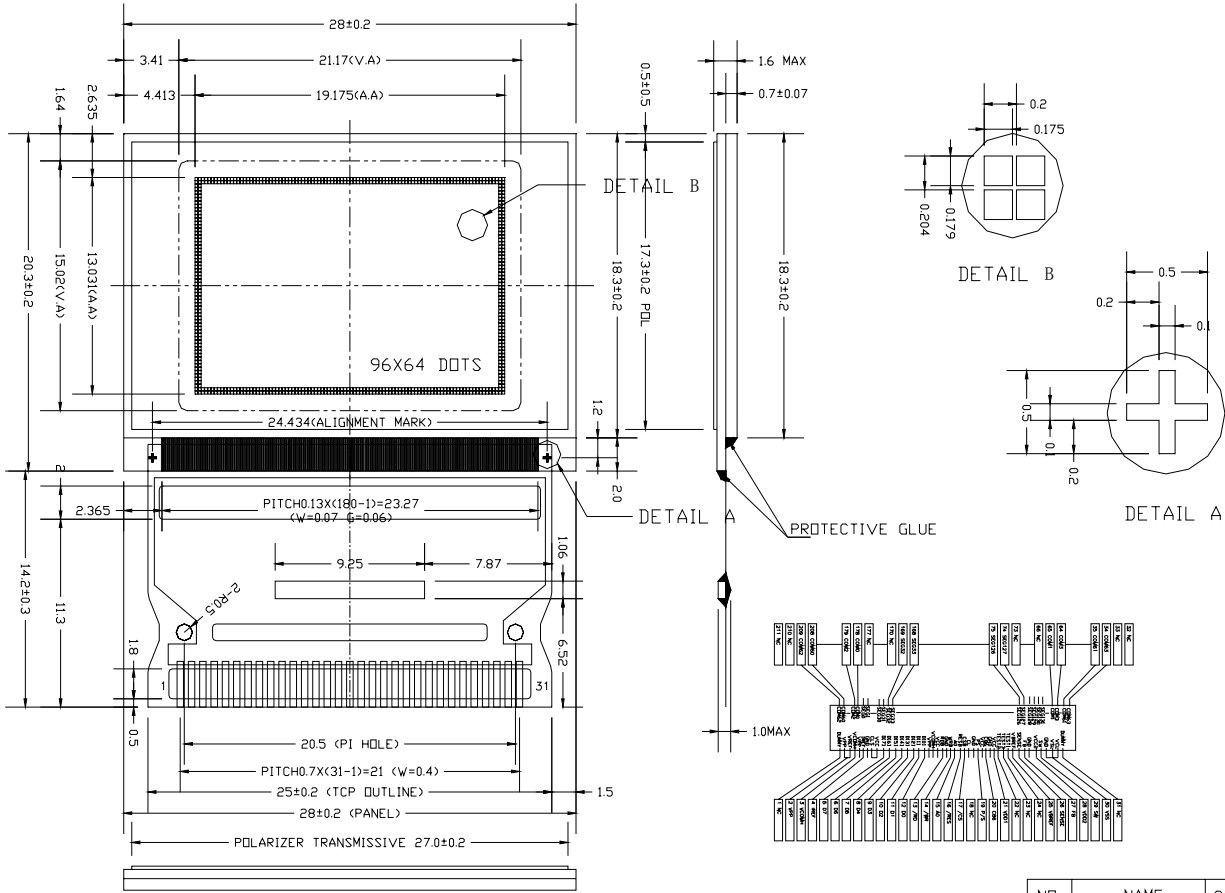




Customer No.:



PIN DESCRIPTION

16 /RES	
15 A0	31 NC
14 /WR	30 VSS
13 /RD	29 SW
12 D0	28 VDD2
11 D1	27 FB
10 D2	26 SENSE
9 D3	25 VBREF
8 D4	24 NC
7 D5	23 NC
6 D6	22 NC
5 D7	21 VDD1
4 IREF	20 C86
3 VCOMH	19 P/S
2 VPP	18 NC
1 NC	17 /CS

- NOTE:
1. OPERATING TEMPERATURE: -20°C TO 70°C
 2. STORAGE TEMPERATURE: -30°C TO 80°C
 3. TCP DRIVER: SH1101
 4. GENERAL TOLERANCE: ±0.2MM

CUSTOMER APPROVE		AMEND		NO.	NAME	QTY	Part No.		
Mechanical	Electrical	△			OLED		MULTI-INNO TECHNOLOGY CO.,LTD.		
		△			1/64 DUTY		PRODUCT NO.	DRAW NO.	REV
		△			/ BIAS		MI9664DO	OLED 96	A
		△			/ Vop		DWN 20070313	DSN 20070313	
		△			/ VDD		CHKD 20070313	APPD . 20070313	
		NO.	CONTENT	DATE	/ O'CLOCK		NOT IN SCALE UNIT mm		SHEET: 3/3