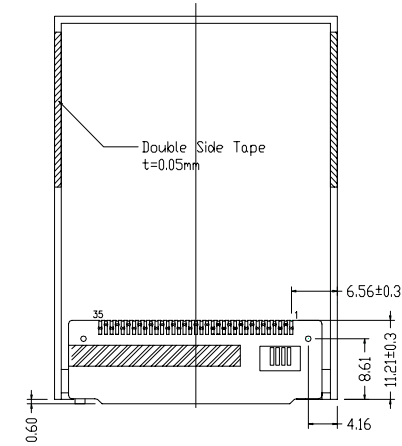
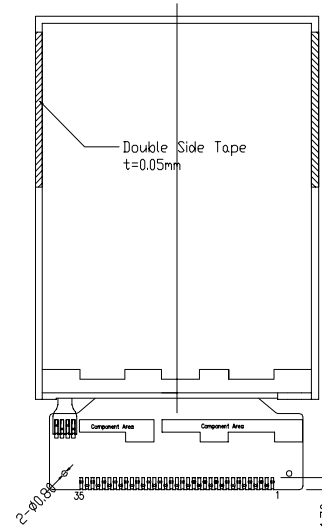


包含双面胶的厚度
2.20MAX



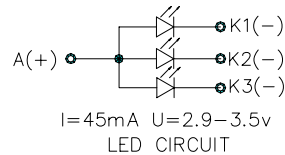
客户弯折参考图

FPC INTERFACE

No.	PIN	NAME
1	GND	
2	YU	NC
3	XL	NC
4	YD	NC
5	XR	NC
6	GND	
7	D15	
8	D14	
9	D13	
10	D12	
11	D11	
12	D10	
13	D9	
14	D8	
15	D7	
16	D6	
17	D5	
18	D4	
19	D3	
20	D2	
21	D1	
22	D0	
23	CS	
24	RS	
25	WR	
26	RD	
27	IMO	
28	RST	
29	VDD	
30	VDD	
31	A+	
32	K-	
33	K-	
34	K-	
35	NC	

NOTES:

- 1.DISPLAY TYPE: TFT
- 2.VIEWING DIRECTION: 6:00
- 3 LCD DRIVE IC: ILI9225B
- 4.POLARIZER MODE: TRANSMISSIVE/POSITIVE
- 5.DRIVE METHOD: 1/220 DUTY
- 6.VDD 2.8V
- 7.BACKLIGHT: 3-CHIP LED PARELLEL(white)
- 8.OPERATING TEMP: -20°C -- 70°C
- 9.STORAGE TEMP: -30°C -- 80°C
- 10.UNMARKED TOLERANCE: ±0.20
- 11.CONTROL DIMENSIONS
- 12. REQUIREMENTS ON ENVIRONMENTAL PROTECTION: ROHS



MULTI-INNO TECHNOLOGY CO.,LTD.

REV	DESCRIPTION	DATE	DRAWN BY:	TITLE: MI0220RT-2	
			CHECKED BY:	DWG NO:	
			APPROVED BY:	DWG NAME:	UNIT: mm
			CONFIRMED BY:		SHEET NO: 1 OF 1