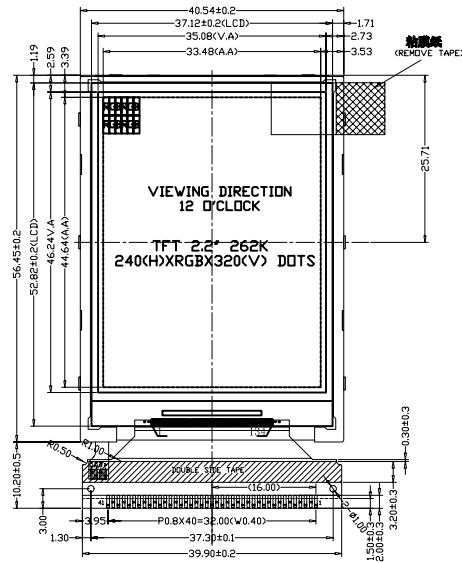
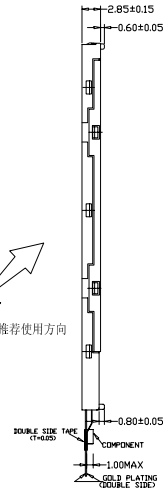




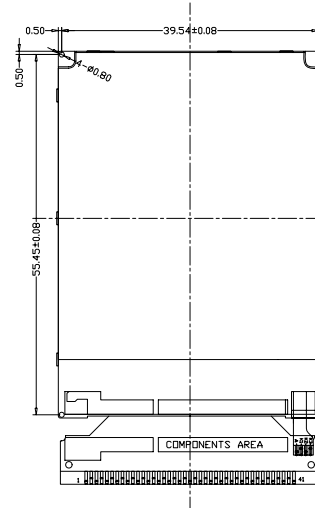
# MULTI-INNO TECHNOLOGY CO., LTD.



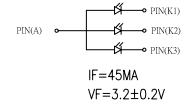
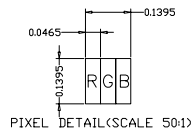
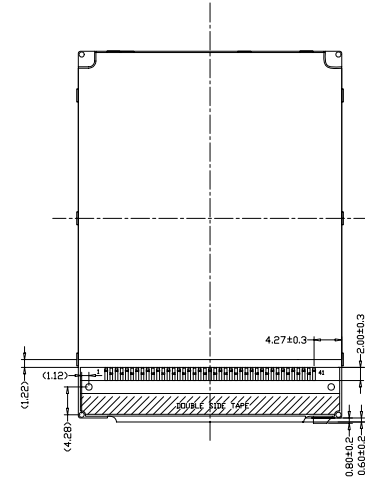
人眼  
模块推荐使用方向



FPC展开出货



客户FPC弯折参考图



PIN DESCRIPTION

1	GND	22	DB6
2	IM0	23	DB5
3	IM1	24	DB4
4	IM2	25	DB3
5	IM3	26	DB2
6	RESET	27	DB1
7	VSYNC	28	DB0
8	HSYNC	29	SDI
9	DOTCLK	30	RD
10	ENABLE	31	WR
11	DB17	32	RS
12	DB16	33	CS
13	DB15	34	FMARK
14	DB14	35	IDVCC
15	DB13	36	VCI
16	DB12	37	GND
17	DB11	38	LEDA
18	DB10	39	LEDK1
19	DB9	40	LEDK2
20	DB8	41	LEDK3
21	DB7		

NOTES:

1. OPERATING TEMP: -20°C~70°C
2. STORAGE TEMP : -30°C~80°C
3. MAIN LCD DRIVER: HX8347G
4. 产品满足ROHS要求
5. GENERAL TOLERANCE : ±0.2

MODULE NO.: MI0220W1T-1