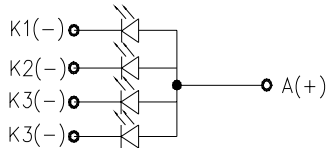


展开出货 (FPC unfolded Shipment)

FPC弯折参考图(FPC Bend Reference Drawing)



DETAIL PIXEL (SCALE 50:1)

NOTES:

1. DISPLAY TYPE:  
MAIN LCD: 262K TFT, TRANSMISIVE, Normally White
2. OPERATING TEMP: -20°C~70°C
3. STORAGE TEMP : -30°C~80°C
4. MAIN LCD DRIVER: HX8368-A
5. BACKLIGHT: 4CHIP-WHITE LED, PARALLEL CONNECTION
6. ROHS COMPLIANCY
7. GENERAL TOLERANCE : ±0.2

1	YU	27	DB16
2	XL	28	DB17
3	YD	29	CSX
4	XR	30	BSX
5	GND	31	WRX
6	IDVCC	32	RDX
7	VCC	33	DS1_VCC
8	PWM_OUT	34	DS1_DDN
9	FMARK	35	DS1_DDP
10	RESET	36	DS1_CLKN
11	DB0	37	DS1_CLKP
12	DB1	38	DE
13	DB2	39	PCLK
14	DB3	40	HSYNC
15	DB4	41	VSYNC
16	DB5	42	SDI
17	DB6	43	BS0
18	DB7	44	BS1
19	DB8	45	BS2
20	DB9	46	BS3
21	DB10	47	LEDA
22	DB11	48	LEDK1
23	DB12	49	LEDK2
24	DB13	50	LEDK3
25	DB14	51	LEDK4
26	DB15		